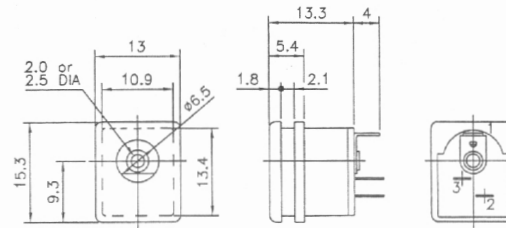


**key-electronic.de**

Steckverbinder und Kabel



**SPECIFICATION**

1. Rating: 2A 16VDC
2. Withstanding voltage:  
AC 500V, 60Hz for 1 minute
3. Insulation resistance (initial):  
100M $\Omega$  (min.) at 500V DC
4. Contact resistance (initial):  
30m $\Omega$ (max.) at AC 100mA (max.) 1 KHz

5. Insertion & Extraction force:  
Initial : 0.3 to 3.0Kgs  
After life test: 0.2 to 3.0Kgs
6. Life test:  
5,000 cycles unloading (20-30 cycle/minute)

**MATERIAL**

1. Housing: Thermoplastic
2. Center pin: Nickel plating.
3. Terminal: Brass/Copper alloy  
Silver plating.

Art.Nr.	Text 1
1801096	DC-Einbaubuchse, Schalter in Ruhestellung geschlossen, Stift 2,0 mm
1801097	DC-Einbaubuchse, Schalter in Ruhestellung geschlossen, Stift 2,5 mm